



Starprint printers and scan-to-file systems





BUILT TO PERFORM

The KIP 7000 expands the possibilities of your print production operations by combining high volume output with exceptionally reliable performance. The KIP 7000 delivers amazing, photo-like fine line and grayscale print quality from its four media rolls. In addition, a monochrome or mono/color dual function KIP scanner may be integrated with the printer to create a full digital printing and scan-to-file system. The ability to generate, duplicate and distribute information quickly and efficiently is the very essence of the KIP 7000.



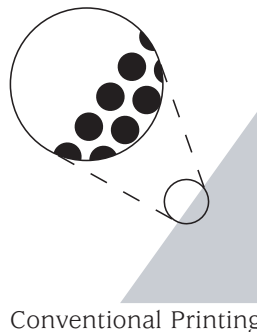
ECONOMICAL OPERATION

KIP 7000 Series printers operate without waste toner or conventional cleaning systems. This environmentally friendly feature allows for lower toner consumption and 100% toner efficiency.

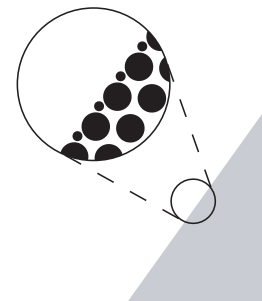


EXTRAORDINARY QUALITY

KIP Image Smoothing Technology (IST) adds additional image data, where needed, between dots to produce visually superior grayscales, diagonals and curved lines.



Conventional Printing



IST Technology

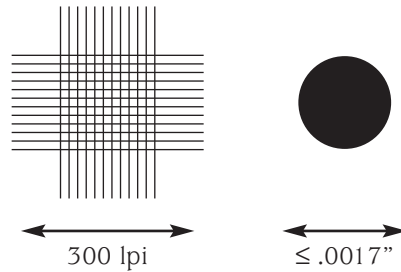


HIGH DEFINITION PRINTING

Reduced dot size, high print resolution and image smoothing technology (IST) provide exceptional quality, high definition lines, distinctive grayscales and consistent solid areas.

KIP HDP technology enables the KIP 7000 Series to provide:

- 300 lines per inch (lpi) vertical and horizontal resolution
- $\leq .0017$ " dot size
- $\leq .0017$ " one pixel line width
- 600 x 600 dpi

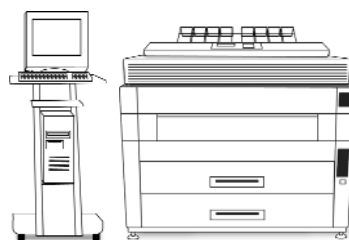


INCREDIBLE VERSATILITY

The KIP 7000 network printer features a Powerprint embedded controller. In addition, the KIP 7000 scan-to-file (STF) system may be configured as either a space saving single footprint system, or a dual footprint system designed for enhanced productivity.



Network Printer



Single Footprint STF



Dual Footprint STF



NETWORK PRINTER



EXCEPTIONAL VERSATILITY

At a print speed of 13 'D' size prints per minute, the KIP 7000 is the perfect printer for high volume print requirements and tough reprographic deadlines.

A footprint for any environment

The KIP 7000 is available in a variety of footprint configurations. The scanner may be placed on top of the printer for a single space saving footprint, or next to the printer creating a dual-footprint setup. In addition, the KIP 7000 is available as a single footprint network printer with embedded controller.

Easy user interface

The KIP 7000 features a display that provides operators with important system information. Users are informed of installed media roll sizes and quantity, toner levels and other key operational information. Functions such as trimming rolls, changing media types and adjusting image density settings may easily be controlled from this display panel.

EXTRAORDINARY QUALITY

Calibrated LED head design

The print head design involves the individual calibration of all LED pixels. This unique process delivers a smoother and more consistent image quality for fine lines, grayscales and graphics.

Contact toner system

The non-magnetic, mono-component KIP 7000 toner technology provides 100% toner efficiency, without unnecessary carriers, developers or waste receptacles to purchase or replace.

Image smoothing technology

Using advanced data matching algorithms that examine the print data, IST enhances grayscale diagonal and curved line output to ensure optimal image quality with every print.



KIP MONOCHROME SCANNERS

KIP monochrome scanners are a range of highly advanced, wide format image capture devices that deliver outstanding performance and quality. A choice of scanners covers the full range of production demands. KIP scanners are designed to make precise image capture a fast, streamlined process regardless of original image quality.

- A range of scanning speeds from 2.0-12.8 ips
- Internal memory for sets copy applications
- Touch screen interface and intuitive controls
- Mode memory stores up to 10 user defined settings
- Excellent connectivity options, including SCSI and TWAIN

KIP MONO/COLOR SCANNER

The KIP 2200 color and monochrome scanner provides high demand users with a unique combination of maximum speed and high resolution. Fully integrated with the complete line of KIP HDP and inkjet printers, the KIP 2200 scan system provides a full suite of state of the art software for color and monochrome copying and scan-to-file applications.

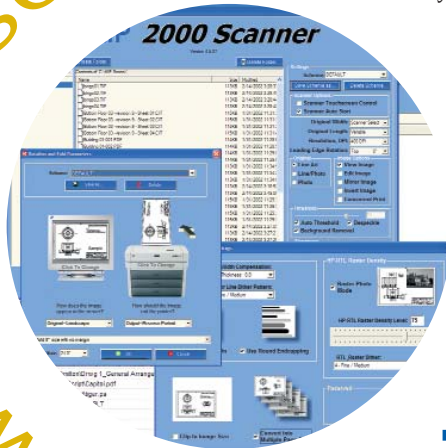
- Dual function scan system - monochrome and color
- Designed for high production environments.
- Maximum speed and high resolution
- True 600 x 600 dpi optical resolution equivalent to KIP 7000
- Enhanced monochrome image quality
- Outstanding high fidelity color imaging
- Integrated with KIP 7000 and Inkjet printers
- Includes standard KIP Powerprint and Color Basic software
- Increase functionality with optional professional grade KIP Color Max software

SCAN-TO-FILE SYSTEM





KIP POWERPRINT SOFTWARE



The Powerprint Software Suite brings the full power of KIP Systems right to the users desktop, providing complete control over all aspects of scanning, printing and print administration.

SOFTWARE FEATURES

- Unlimited software site license
- Modern and intuitive graphical user interface
- Live printer status updates
- All standard CAD and raster formats supported
- Simultaneous print and scan
- Standard interface across entire KIP digital product range
- Advanced AutoCAD, Windows and TWAIN drivers
- Web or network based print queue management including comprehensive accounting reports
- Simple printer connectivity via IP address, computer name or through the server based KIP Windows Driver
- Powerprint Request provides job submission, instant file view/preview and displays print queue status
- Advanced dithering and grayscale controls
- Scan to PDF file format as a standard feature

KIP COPY MAKER FEATURES

- Easy to use, intuitive and simple interface provides comfort for novice users and advanced features for key operators.
- Multiple printing parameters let users input originals once and print multiple sets with custom output settings.
- Accounting data allows copies to be tracked and accounted for.
- Concurrent print function outputs a complete set of prints as originals are input.
- View images prior to copying and view up to 50 previously saved jobs.

OPTIONAL KIP SOFTWARE

- **Powerprint Online** is an easy to use, high performance digital print job preparation and management system. *Users may create, prepare and submit digital print jobs over corporate networks, Email or FTP services.*
- **Powerscript³** provides industry-leading *PDF and PostScript* printing capabilities. In addition, enhanced scaling provides enlargement/reduction of photo-quality grayscale images with no loss of quality.
- The KIP **All-in-One Control Center** is a compact, touch screen solution providing immediate access to the print queue and system settings. Users may interrupt printing to accommodate "rush jobs", while keeping track of current jobs and jobs that need immediate attention.

KIP 200 STACKER

This compact, space saving print stacker is capable of efficiently stacking up to 250 prints. The adjustable paper stop plate easily accommodates 'A' to 'E' size prints and convenient casters provide mobility.

KIP 1000 STACKER

This high capacity stacker holds up to 1000 'A' to 'E' size prints with convenient casters for mobile operations.

KIP 1200 STACKER

The KIP 1200 stacker is a convenient and cost effective high volume stacking system for 'A' to 'E' size prints. Up to 1,000 mixed size prints on bond, vellum or film are effortlessly collected on this intelligent online stacker.

KIP ADF 300

The KIP Automatic Document Feeder (ADF) provides *unmanned original feeding* for batch scanning operations without compromising speed or reliability. The ADF 300 is capable of efficiently feeding up to 250 'D' or 'E' size prints of bond or vellum and is compatible with all KIP scanners.

KIPFOLD 7000

The KIPFold 7000 online folding system communicates directly with KIP 7000 series printers, and may be controlled through the folder touch screen or Powerprint software. The system comes standard with packet and book folding capabilities up to 8 ft. in length and fan folding up to 20 ft. in length. The folder offers an output tray that stacks up to 50+ folded documents for collated sets.

FOLDING AND FINISHING OPTIONS



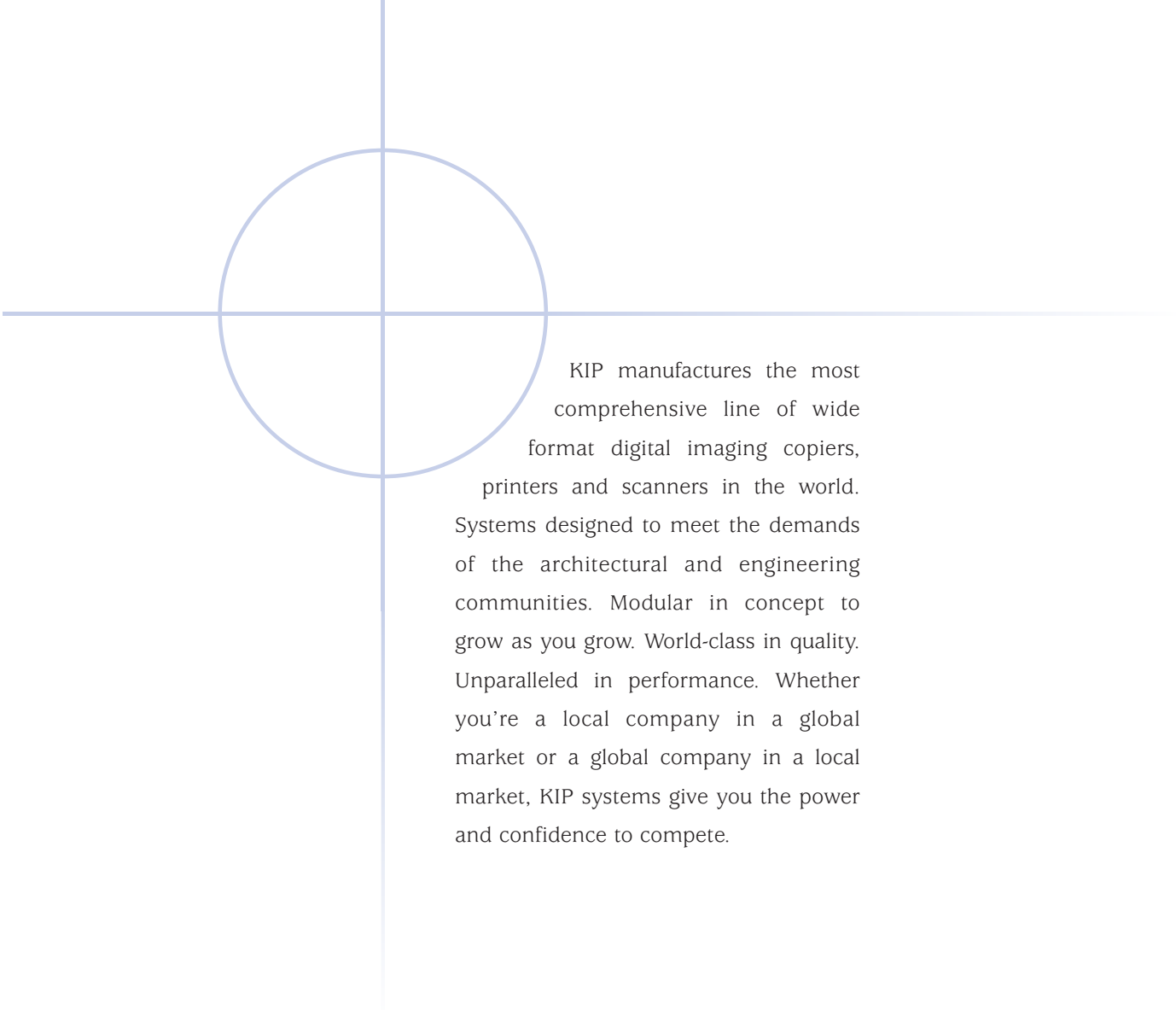
KIP 200 Stacker

KIP 1000 Stacker

KIP 1200 Stacker

KIP ADF 300

KIPFold 7000



KIP manufactures the most comprehensive line of wide format digital imaging copiers, printers and scanners in the world. Systems designed to meet the demands of the architectural and engineering communities. Modular in concept to grow as you grow. World-class in quality. Unparalleled in performance. Whether you're a local company in a global market or a global company in a local market, KIP systems give you the power and confidence to compete.

KIP

KIP America: (800) 252-6793 ♦ Email: sales@kipamerica.com ♦ Website: www.kipamerica.com

AutoCAD is a registered trademark of Autodesk Inc. KIP Powerprint and Starprint are registered trademarks of KIP America.

All other product names mentioned herein are trademarks of their respective companies.

KIP Brochure No.KIP7000.8/04

Printer Specifications



Starprint 7000 Printer

The KIP 7000 Series, part of the Starprint Family of Printers and Scan-to-File Systems offers exceptional print quality with KIP High Definition Print Technology. The KIP 7000 operates at a constant speed of 13 'D' size or 32'/min. True concurrent scanning and printing lets you scan and prepare jobs in advance while spooled jobs are processed and printed. Paper rolls and toner bottles may even be changed while the machine is still operating. By adding a KIP scanner, the 7000 series printer may be easily upgraded to a powerful digital copying, scan-to-file and network print management system. (model 7050 STF, 7080 STF, 7120 STF, 7200 STF) Please refer to the KIP Scanning Systems section for scanner specifications.

Features

- Print and scan-to-file simultaneously
- Multiple prints up to 999
- Automatic file detection
- Automatic roll selection/switching
- Ultra-fast file processing on the controller
- Pen management and dithering control
- Remote diagnostics

Technology	LED printer with KIP HDP Plus Technology
Resolution	300 lpi horizontal and vertical
Speed	13 'D' size per min, 6.4" / sec. 32'/min
Media	4 roll (500') with manual sheet feed bypass
Media Tray	200 'E' sized prints
Warm-up	Instant from standby 5 minutes from cold startup
Output	Minimum: 8.5" x 11" Maximum: 36" x 75'
Media Types	Bond 16-20 lb, Film 3-3.5 mil., Vellum 16-20 lb, Tinted 16-24 lb
Dimensions	54" (W) x 29" (D) x 38" (H)
Weight	770 lbs
Power	Low Power (sleep mode) 100W
Consumption	Standby 604 W Printing 2.45kW
Electrical Requirements	220-240V, 16 Amps
Acoustic Noise	Standby: 55dB, Printing: 70dB
Safety Approvals	UL, CSA, FCC Class A

Powerprint Embedded Controller

Platform	KIP Powerprint software with Windows XP
Network	TCP/IP, NetBEUI (smb), Novell
Protocols	(IPX/SPX), LPR/LPD
File Formats	HPGL 1/2, HP-RTL, Calcomp 906/907, CALS Group 4, TIFF Group 4, PCX, Intergraph CIT/TG4, Versatec Color Graphics (VCGL), Uncompressed Grayscale TIFF, TIFF Packbits, IBM IOCA, EDMICS, TLC (KIP), PNG, JPEG
Optional	ATA Complaint CGM
File Formats	Postscript level 3 for EPS, PS, and PDF

KIP 200 Stacker

This heavy duty print stacking system is capable of holding up to 500 'E' size prints. Complete with casters for mobile operations. An adjustable panel catches prints from 8.5" x 11" to 36" x 48" .

KIP 1000 Super Stacker

This heavy-duty print stacking system is capable of holding up to 1000 'E' size prints. Complete with casters for mobile operations.

KIP 1200 Auto Stacker

This heavy-duty print stacking system is capable of holding up to 1000 'D' size prints. Infrared communication with printer enables operations.

KIPFold 7000

The online/offline KIPFold 7000 folding and finishing system is configured to the specific print speed of the KIP printer. The system comes standard with 8.5" x 11" packet and book folding capabilities up to 8 ft. in length and fan folding up to 12 ft. in length. The folder offers an output tray that stacks up to 150+ folded documents for collated sets. The system also includes a print stacker for unfolded documents, fanfolds and long documents.

All-in-One Control Center

The All-in-One Control Center gives users immediate access to the print queue and all printer functions, depending on their security level. This complete touch screen control center is a perfect solution for environments where the printer may not be near an external or STF PC, which is normally used to view the print queue or system status via the network. Regardless of where network PCs are located, the KIP All-in-One Control Center lets authorized users directly control the print queue, create print jobs and edit system settings right from the printer!